

---

# Installing an API

To install a KPCI-PIO programming interface, select one of the following topics for more information.

## Installing DriverLINX

The normal installation process automatically installs both the DriverLINX and Direct I/O APIs. Follow the instructions in the DriverLINX CD installer.

## Installing the I/O Emulation Interface

To use the I/O Emulation interface, you must manually install a Win 95/98 virtual device driver and configure it.

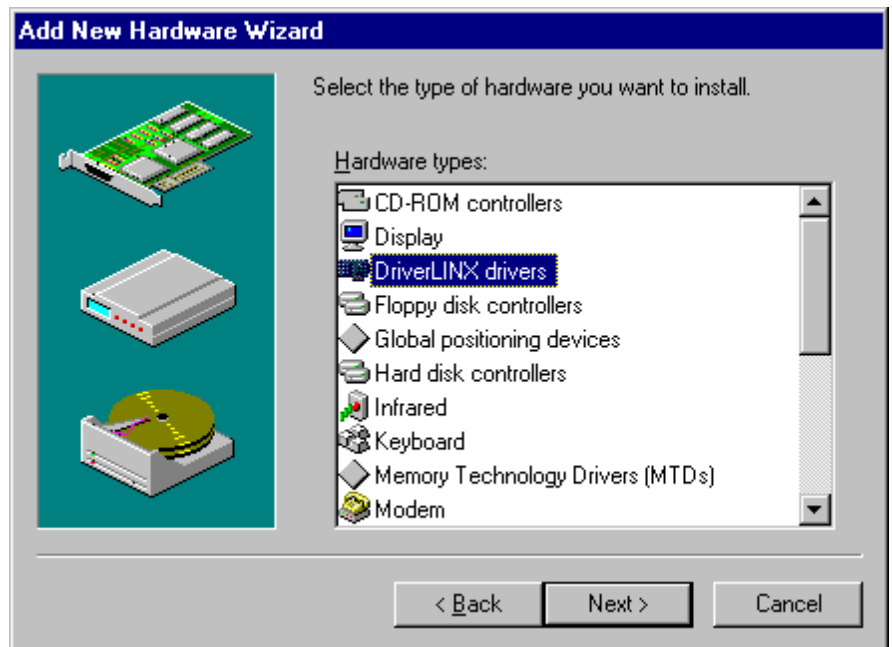
### *Installing the I/O Emulation Driver*

---

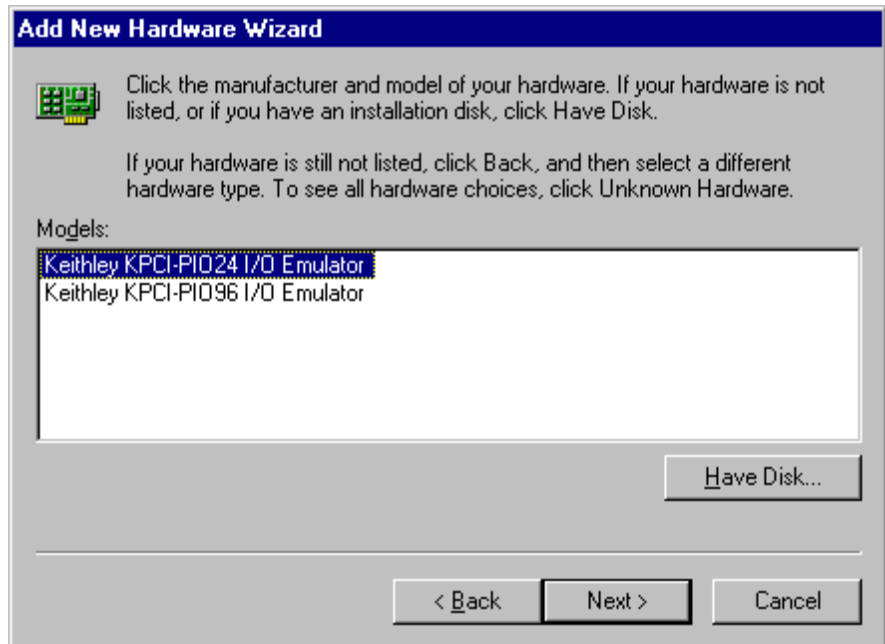
You must be running Win 95/98 and have already installed the DriverLINX drivers from the DriverLINX CD Browser.

---

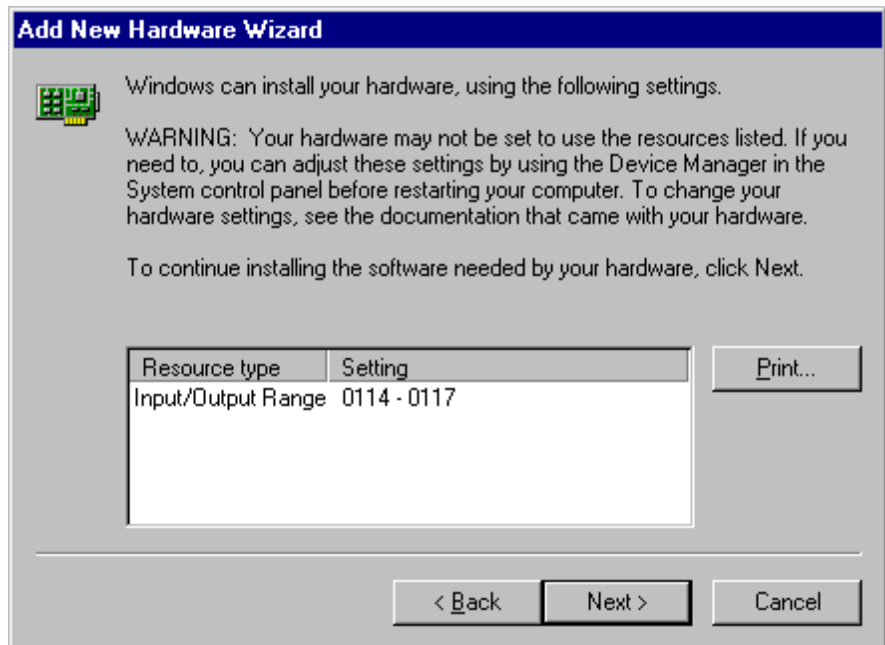
1. [Click here to automatically start the Add New Hardware Wizard, or—](#) From the Windows Control Panel, click the Add New Hardware icon.
2. Click Next to begin installing the driver.
3. Select No for the question, “Do you want Windows to search for your new hardware?” and click Next.
4. Select the icon for “DriverLINX drivers” and click Next.



5. Select the name of the I/O Emulator you want to install. Your selection must be compatible with your hardware model. Click Next to continue.



6. Windows will select an available I/O address for the emulation driver. Click Next to continue.

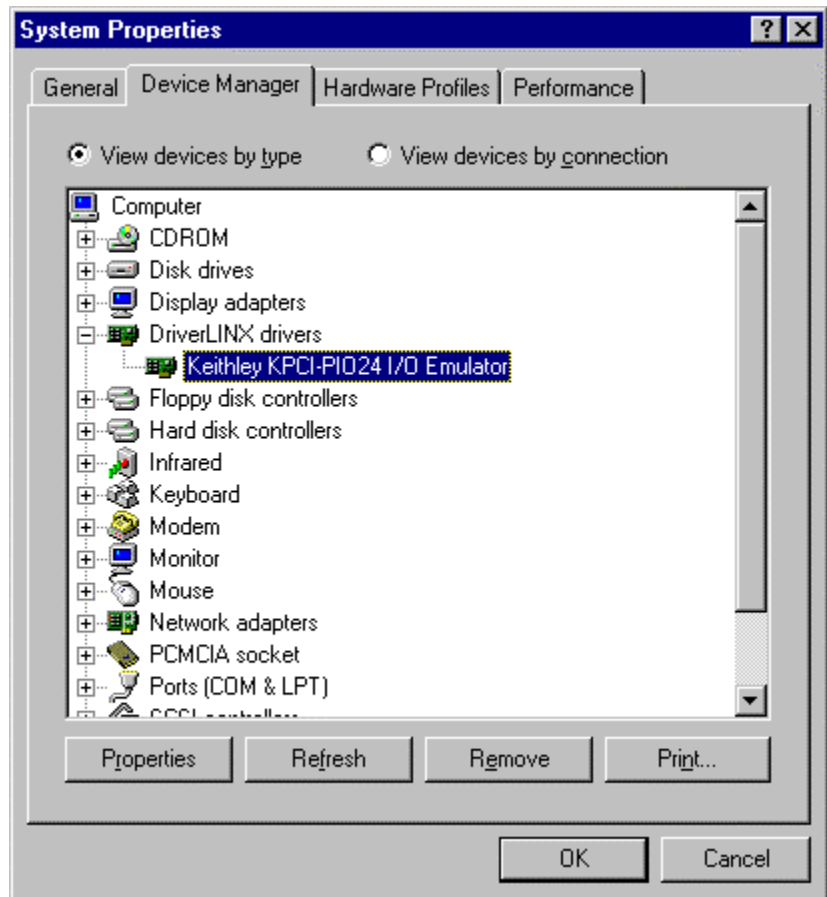


7. Click Finish to close the wizard. Windows will load the I/O Emulation driver the next time you reboot Windows.

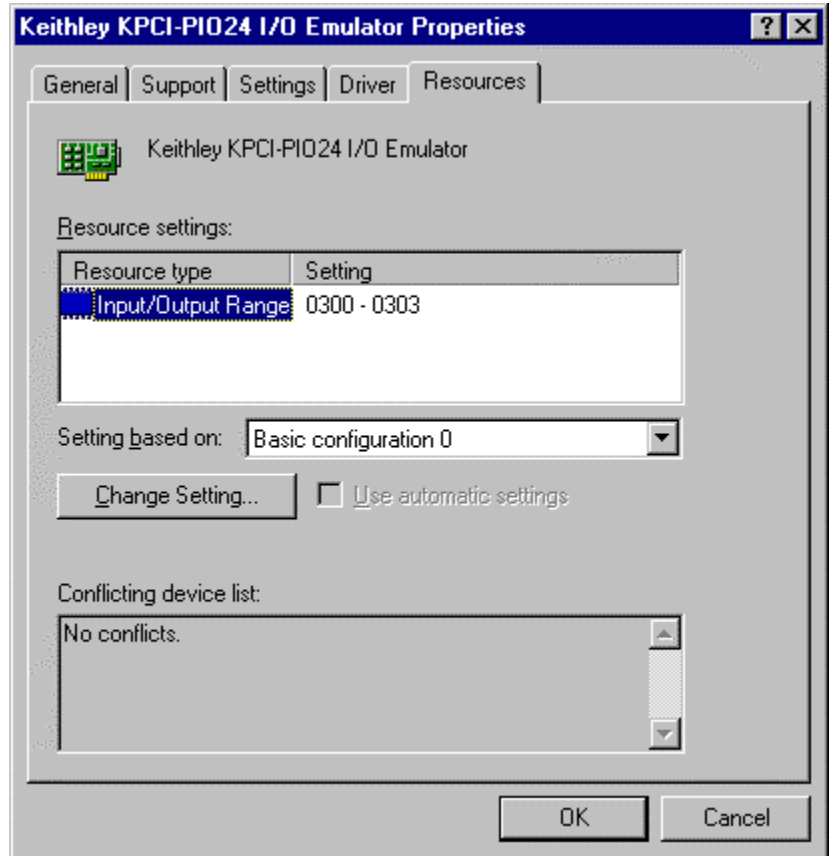
### ***Configuring the I/O Emulation Driver***

Windows should automatically select an available I/O address for the I/O Emulation Driver. If you wish to check or modify this address,

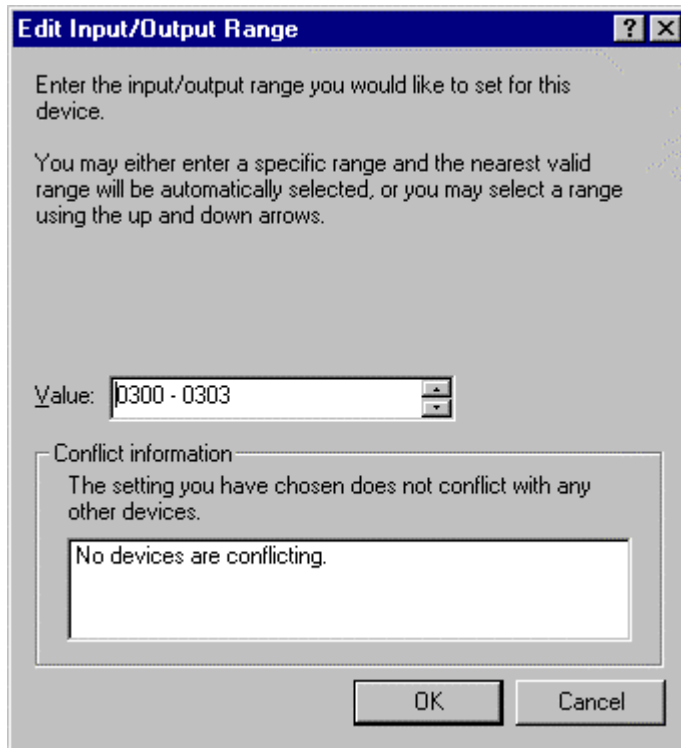
1. [Click here to automatically start the Device Manager](#), or—From Windows Control Panel, click the System icon and then select the Device Manager tab.
2. Click on the “+” next to DriverLINX drivers to expand the list of installed drivers.
3. Click on the driver you want to inspect and then click Properties.



4. Select the Resources tab to see the current I/O address assignment.



5. Select Input/Output Range and click the “Change Setting...” button.
6. Enter a new input/output range for the device. Click OK to accept the changes.



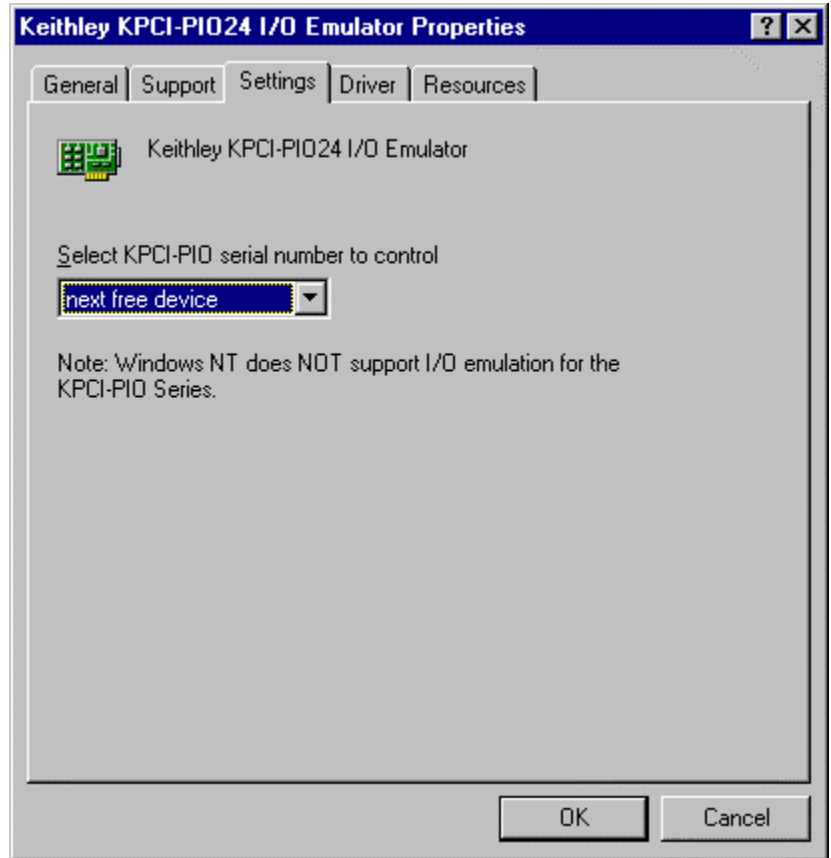
7. Click OK to close the Device Manager. Windows will make the changes the next time you reboot.

### ***Assigning the I/O Emulator to a KPCI-PIO Board***

Normally Windows assigns the I/O emulation address to the next available KPCI-PIO device it finds during scanning the PCI bus. If you have more than one device installed, changing a card's bus slot may change the I/O address that Windows previously assigned to this device. To prevent this, you can configure the I/O Emulation driver to always attach to a device with a given serial number.

1. [Click here to start the Device Manager](#). From Windows Device Manager, select the driver you wish to configure and click the "Properties" button

2. Click the Settings tab to select the KPCI-PIO device for the driver.



3. To assign the driver's I/O address to a specific KPCI-PIO board, select the board's serial number in the drop-down list. Note that this list only displays currently installed boards.
4. To assign the driver to the next available board, select "next free device" in the drop-down list.
5. Click OK to close the Emulator Properties.
6. Windows will make the requested I/O address assignment the next time you reboot Windows.